



La Plage Court Drive, La Route de la Haule, St Lawrence, Jersey, JE3

1LD

0495 000

Court Drive, St Lawrence, JE3 1LD

This charming one-bedroom cottage is just a stone's throw from the beach and all the local restaurants. Enjoy the lovely scenic beachfront walk to St Aubin, with its stunning views and excellent amenities on offer. La Plage is nestled away from traffic noise, yet on a good bus route and offers a peaceful retreat while still being within easy reach of everything you need. The cottage benefits from two tandem parking spaces and features an entrance porch, cosy sitting room, double bedroom, fitted kitchen, bathroom/WC. At the rear, you'll find a small enclosed patio perfect for relaxing. Whether you're seeking a full-time home or a lovely pied-à-terre, this is the ideal spot. Call us today to arrange your viewing!

SERVICES

Electric heating
Large loft
Fully tiled bathroom
Fitted Kitchen

particulars are approximate and rounded. The text, photographs and floor plans are for general guidance only.

ANTI MONEY LAUNDERING REGULATION

Once an offer is accepted and negotiations for the purchase of a property are entered into, the prospective purchasers will be asked to produce photographic identification (passport or driving licence) and proof of residency documentation eg, a current utility bill together with confirmation of source of funds. This is in order for us to comply with the current Money Laundering Legislation

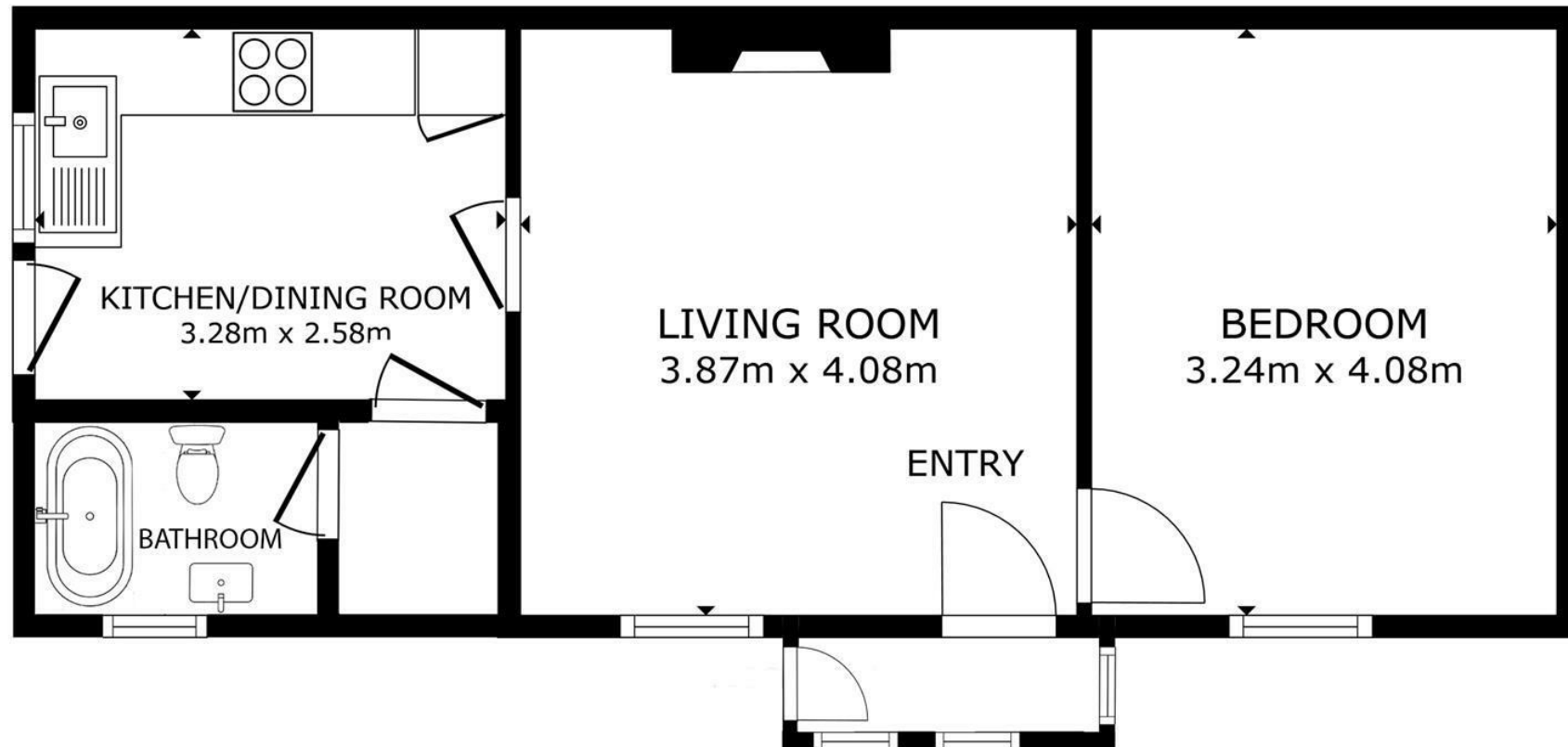
DISCLAIMER

Please note that Slomans Estate Agents we have prepared these particulars as a general guide only. We have not carried out a detailed survey, nor tested the services, appliances and specified fittings. These particulars are supplied on the understanding that all negotiations are conducted through Slomans Estate Agents. Their accuracy is not guaranteed nor do they form part of any contract.

VIEWING

Please call Slomans, Sole Agents on 87 97 87. Please note that all areas and measurements given in these





FLOOR PLAN

GROSS INTERNAL AREA
FLOOR PLAN 45 m²
TOTAL : 45 m²

SIZES AND DIMENSIONS ARE APPROXIMATE, ACTUAL MAY VARY.

